



DC SERIES
Packaged Air Conditioning/Heating System

Specifications		Model Size 420			
Performance	Cooling Rated In Accordance With ARI Std 340/360	Total Cooling (Mbtu/h)	455.2		
		EER	9.0		
		IPLV	8.7		
		Optional Capacity Reduction	100-50-0 — 100-50-25-0		
	Chilled Water	Nominal Mbtu/h (4 row coil)	393.2		
		Nominal Mbtu/h (6 row coil)	534.9		
	OPTIONAL HEAT				
	Electric	Voltage-Phase-Hz	208/240-3-60	480-3-60	600-3-60
		Min-Max kW	60 – 240	60 – 240	
	Gas	Standard Heating Input Available (Mbtu/h)	300 thru 1600		
Thermal Efficiency		80%			
Hot Water	Nominal Mbtu/h (1 row coil / 2 row coil)	472.0 / 860.1			
Steam	Nominal MBH Mbtu/h (1 row coil / 2 row coil)	596.9 / 1016.0			
Rating Conditions	Nominal cfm	14,000			
Electrical Data	Service	Voltage-Phase-Hz	208/230-3-60	460-3-60	575-3-60
	Scroll Compressor	Nominal Tons – Quantity	21.9 – 2		
		RLA ea	37.2	17.3	—
		LRA ea	239.0	125.0	—
	3 phase Condenser Fan Motor(s)	hp — Quantity	1hp — 6		
		FLA ea	3.4	1.7	—
		Total cfm	34,800		
	5 hp Motor	FLA	13.4	6.7	—
		Unit Minimum Circuit Ampacity	191.9	90.4	—
		Max. Time Delay Fuse or HACR Breaker	225 (229.1)	100 (107.7)	—
	7½ hp Motor	FLA	20.0	10.0	—
		Unit Minimum Circuit Ampacity	198.5	93.7	—
		Max. Time Delay Fuse or HACR Breaker	225 (235.7)	110 (111.0)	—
	10 hp Motor	FLA	25.0	12.5	—
		Unit Minimum Circuit Ampacity	205.5	97.9	—
		Max. Time Delay Fuse or HACR Breaker	225 (243.7)	110 (115.0)	—
	15 hp Motor	FLA	38.6	19.3	—
		Unit Minimum Circuit Ampacity	217.1	103.0	—
		Max. Time Delay Fuse or HACR Breaker	250 (254.3)	110 (120.3)	—
	20 hp Motor	FLA	56.0	24.8	—
Unit Minimum Circuit Ampacity		234.5	108.5	—	
Max. Time Delay Fuse or HACR Breaker		250 (271.7)	125 (125.8)	—	
Note: MCA and MFS data above is for basic unit; includes compressor(s), condenser fan motor(s) and supply fan motor. The values do not include return, exhaust or heat wheel motors. To include them, determine MCA by adding the amp values to the MCA values above. Determine MFS by adding the amp values in parenthesis above and round down to the next fuse size. Fuse sizes are 15, 20, 25, 30, 35, 40, 45, 50, 60, 70, 80, 90, 100, 110, 125, 150, 175, 200, 250, 300, 350, and 400.					
ECW 244, 324, 364	½ hp motor FLA	2.4	1.2	—	
ECW 424, 484, 544	¾ hp motor FLA	3.0	1.5	—	
ECW 664, 606, 666, 726	1 hp motor FLA	3.4	1.7	—	
Physical Data	EVAP. Coil Alum. Fins on Copper Tubes	Face Area (Sq. Ft.)	26.0		
		Rows Deep – Fins per Inch	4 — 13		
	Condenser Coil Alum. Fins on Copper Tubes	Face Area (Sq. Ft.)	46.2		
		Rows Deep – Fins per Inch	4 — 12		
	Coil Connections	Chilled Water Coil	2 3/4" ODS		
		Steam Coil, 1 row — 2 row	2" — 2 1/2" MPT		
		Hot Water Coil, 1 row — 2 row	2 3/4" — 2 3/4" ODS		
	Evaporator Blower	Single Width Backward Inclined Plenum Fan — see blower performance table for size			
Condensate Drain	Size – MPT — Quantity	¾ — 2			
Filters: Disposable	Size — Quantity	24 x 24 x 2 — 6			



24.5" Dia. Plenum Fan - Supply and Return																				
Total Static Pressure - Inches H2O																				
cfm	0.5		0.75		1		1.5		2		2.5		3		3.5		4		5	
	rpm	bhp	rpm	bhp	rpm	bhp	rpm	bhp	rpm	bhp	rpm	bhp	rpm	bhp	rpm	bhp	rpm	bhp	rpm	bhp
3900	674	0.5	742	0.7	807	0.9	931	1.4	1049	1.9	1179	2.5	1309	3.2	1424	3.8	1518	4.5	1495	6.3
6400	971	1.3	1011	1.6	1052	1.9	1128	2.4	1212	3.1	1288	3.7	1368	4.5	1443	5.2	1517	6.0	1508	8.6
8900	1295	2.8	1324	3.2	1352	3.6	1409	4.3	1468	5.0	1522	5.8	1578	6.6	1334	7.2	1396	8.3	1516	10.5
11400	1184	3.8	1210	4.2	1234	4.7	1283	5.6	1334	6.6	1383	7.5	1429	8.5	1484	9.7	1535	10.9	1406	13.3
14000	1431	6.4	1453	7.0	1474	7.5	1514	8.7	1553	9.9	1284	9.4	1325	10.6	1372	12.0	1419	13.4	1506	16.4

27.0" Dia. Plenum Fan - Supply and Return																				
Total Static Pressure - Inches H2O																				
cfm	0.5		0.75		1		1.5		2		2.5		3		3.5		4		5	
	rpm	bhp	rpm	bhp	rpm	bhp	rpm	bhp	rpm	bhp	rpm	bhp	rpm	bhp	rpm	bhp	rpm	bhp	rpm	bhp
3900	674	0.5	742	0.7	807	0.9	931	1.4	1049	1.9	1179	2.5	1309	3.2	1424	3.8	1518	4.5	1495	6.3
6400	971	1.3	1011	1.6	1052	1.9	1128	2.4	1212	3.1	1288	3.7	1368	4.5	1443	5.2	1517	6.0	1508	8.6
8900	1295	2.8	1324	3.2	1352	3.6	1409	4.3	1468	5.0	1522	5.8	1578	6.6	1334	7.2	1396	8.3	1516	10.5
11400	1184	3.8	1210	4.2	1234	4.7	1283	5.6	1334	6.6	1383	7.5	1429	8.5	1484	9.7	1535	10.9	1406	13.3
14000	1431	6.4	1453	7.0	1474	7.5	1514	8.7	1553	9.9	1284	9.4	1325	10.6	1372	12.0	1419	13.4	1506	16.4

30.0" Dia. Plenum Fan - Supply																				
Total Static Pressure - Inches H2O																				
cfm	0.5		0.75		1		1.5		2		2.5		3		3.5		4		5	
	rpm	bhp	rpm	bhp	rpm	bhp	rpm	bhp	rpm	bhp	rpm	bhp	rpm	bhp	rpm	bhp	rpm	bhp	rpm	bhp
3900	674	0.5	742	0.7	807	0.9	931	1.4	1049	1.9	1179	2.5	1309	3.2	1424	3.8	1518	4.5	1495	6.3
6400	971	1.3	1011	1.6	1052	1.9	1128	2.4	1212	3.1	1288	3.7	1368	4.5	1443	5.2	1517	6.0	1508	8.6
8900	1295	2.8	1324	3.2	1352	3.6	1409	4.3	1468	5.0	1522	5.8	1578	6.6	1334	7.2	1396	8.3	1516	10.5
11400	1184	3.8	1210	4.2	1234	4.7	1283	5.6	1334	6.6	1383	7.5	1429	8.5	1484	9.7	1535	10.9	1406	13.3
14000	1431	6.4	1453	7.0	1474	7.5	1514	8.7	1553	9.9	1284	9.4	1325	10.6	1372	12.0	1419	13.4	1506	16.4

Note: Add the pressure drop of the selected components to the design external static pressure of the job, then consult the blower performance tables for blower selection.

18" x 18" FC Fan - Exhaust																				
Total Static Pressure - Inches H2O																				
cfm	0.5		0.75		1		1.5		2		2.5		3		3.5		4		5	
	rpm	bhp	rpm	bhp	rpm	bhp	rpm	bhp	rpm	bhp	rpm	bhp	rpm	bhp	rpm	bhp	rpm	bhp	rpm	bhp
3900	398	0.6	486	0.9	578	1.1	735	1.7	858	2.3	955	2.9	1045	3.7	1126	4.4	1199	5.1	1329	6.6
6400	450	1.4	515	1.8	571	2.1	682	3.0	790	3.8	895	4.6	1011	5.4	1110	6.4	1198	7.3	1349	9.3
8900	600	9.3	611	9.3	630	3.9	723	4.9	803	5.8	883	6.9	959	8.1	1038	9.4	1119	10.6	1277	12.7
11400	741	12.7	747	12.7	778	12.7	785	7.9	860	8.9	929	10.3	993	11.5	1054	12.6	1121	14.3	1240	17.4
14000	879	17.4	913	17.4	917	17.4	937	17.4	975	17.4	992	15.0	1052	16.4	1112	18.2	1167	19.8	1267	22.6

Note: Table can be interpolated but not extrapolated.

Component Pressure Drop (inches W.C.)

Component	Return Air Damper	2" Throw-a-way Filter	2" 30% Pleated Filter	2" Metal Mesh Filter	61/210 kW (ea) Elec. Heater	120/240 kW (ea) Elec. Heater	1 Row Hot Water Coil	2 Row Hot Water Coil
cfm								
6000	0.05	0.08	0.17	0.16	0.20	0.20	0.03	0.05
7000	0.06	0.09	0.20	0.18	0.22	0.22	0.04	0.07
8500	0.07	0.11	0.27	0.21	0.28	0.28	0.05	0.10
10000	0.10	0.13	0.33	0.28	0.36	0.36	0.06	0.13
12000	0.12	0.15	0.37	0.31	0.44	0.44	0.09	0.17
14000	0.14	0.17	0.41	0.35	0.49	0.49	0.12	0.22

Component	1 Row Steam Coil	2 Row Steam Coil	4 Row DX Coil	1 Row Hot Gas Reheat Coil	Sub Cool Coil	Reheat Plus (Includes DX, Reheat & Sub Cool Coils)	300 Mbtu/h Input Gas Furnace	350 Mbtu/h Input Gas Furnace	400 Mbtu/h Input Gas Furnace
cfm									
6000	0.04	0.07	0.14	0.04	0.04	0.22	0.40	0.39	0.38
7000	0.05	0.07	0.18	0.05	0.05	0.28	0.48	0.46	0.44
8500	0.06	0.09	0.23	0.06	0.06	0.35	0.60	0.58	0.56
10000	0.13	0.17	0.28	0.08	0.08	0.44	NA	0.74	0.72
12000	0.17	0.24	0.40	0.12	0.12	0.64	NA	NA	0.85
14000	0.17	0.31	0.53	0.16	0.16	0.85	NA	NA	NA

Component	500 Mbtu/h Input Gas Furnace	600 Mbtu/h Input Gas Furnace	700 Mbtu/h Input Gas Furnace	800 Mbtu/h Input Gas Furnace	1000 Mbtu/h Input Gas Furnace	1200 Mbtu/h Input Gas Furnace	1400 Mbtu/h Input Gas Furnace	1600 Mbtu/h Input Gas Furnace
cfm								
6000	0.37	0.36	0.35	0.34	NA	NA	NA	NA
7000	0.42	0.40	0.38	0.36	0.55	NA	NA	NA
8000	0.54	0.52	0.50	0.48	0.60	NA	NA	NA
10000	0.70	0.68	0.66	0.64	0.75	0.72	NA	NA
12000	0.82	0.78	0.74	0.70	0.85	0.81	0.78	0.75
14000	0.95	0.91	0.87	0.83	0.95	0.91	0.88	0.85

Note: See ECW performance table for ECW pressure drop

DX Cooling at 95°F Air on Outdoor (Condenser) Coil															
cfm	dbt	Entering Air Temperature (°F)													
		75				80					85				
	wbt	59	63	67	71	59	63	67	71	75	59	63	67	71	75
6000	TOT Btu/h	340850	364744	390162	415992	342040	366326	393178	418920	446296	345838	367544	393958	420904	449460
	SENS Btu/h	259174	234108	204852	174746	290860	265654	239914	209474	178562	323966	297394	272028	244394	213378
	WATTS INPUT	42330	42854	43360	43950	42364	42896	43426	44044	44690	42402	42932	43478	44130	44752
	LVG dbt (°F)	35.8	39.6	43.9	48.6	36	39.8	43.7	48.3	53.1	36	40	43.9	48.1	52.8
	LVG wbt (°F)	35	39.3	43.7	48.4	34.9	39.1	43.6	48.1	52.9	34.5	38.9	43.3	47.9	52.6
7000	TOT Btu/h	357356	381986	407910	433888	360020	384382	410730	437546	465016	365784	385808	411980	439548	468708
	SENS Btu/h	278348	248798	216654	181432	315918	286594	253714	221992	186038	353448	323336	291532	259818	226596
	WATTS INPUT	42702	43244	43780	44394	42764	43248	43910	44458	45094	42850	43290	43928	44584	45178
	LVG dbt (°F)	38.9	42.8	46.9	51.5	39.1	42.9	47.1	51.2	56	39.2	43.1	47.2	51.3	55.7
	LVG wbt (°F)	37.9	42.2	46.7	51.3	37.7	42	46.6	51	55.8	37.2	41.8	46.3	50.9	55.5
8000	TOT Btu/h	371158	396220	421630	448018	375082	397818	425682	451652	479544	385146	401730	427056	455082	483042
	SENS Btu/h	297256	263340	227866	187454	339314	303664	268960	233624	192886	381784	347506	311516	276004	238890
	WATTS INPUT	42964	43518	44142	44716	43054	43610	44188	44848	45438	43306	43644	44226	44870	45610
	LVG dbt (°F)	41.3	45.1	49.2	53.8	41.5	45.6	49.5	53.5	58.3	41.7	45.6	49.7	53.7	57.9
	LVG wbt (°F)	40.2	44.5	49	53.6	39.9	44.3	48.9	53.4	58.1	39.2	44.1	48.6	53.1	57.8
9000	TOT Btu/h	381718	407052	432946	459424	387378	409898	436852	463334	490696	416292	413966	438354	466378	494954
	SENS Btu/h	313064	274776	236102	193060	360678	322392	280838	242634	199232	416292	368108	328456	288444	248596
	WATTS INPUT	43240	43812	44414	44978	43322	43826	44504	45132	45794	43996	43978	44542	45212	45912
	LVG dbt (°F)	43.4	47.3	51.2	55.7	43.7	47.5	51.7	55.5	60.1	43	47.9	51.9	55.9	59.9
	LVG wbt (°F)	42	46.4	50.9	55.5	41.7	46.2	50.8	55.2	59.9	40.1	45.9	50.5	55	59.7
10000	TOT Btu/h	391314	416290	442822	468292	399996	418816	447030	472936	500128	432728	424664	448824	476330	505416
	SENS Btu/h	329796	286312	245158	198204	382048	337712	294402	251086	205506	432728	388828	347116	301878	259286
	WATTS INPUT	43412	44034	44592	45246	43598	44086	44690	45370	46036	44374	44228	44730	45446	46104
	LVG dbt (°F)	45.1	49	52.8	57.2	45.3	49.4	53.3	57.2	61.5	45.8	49.7	53.5	57.6	61.5
	LVG wbt (°F)	43.5	47.9	52.4	57	43.1	47.7	52.3	56.7	61.3	41.5	47.4	52	56.5	61.1
12000	TOT Btu/h	407836	431020	457674	482518	437006	436770	461710	488494	514640	460152	445708	465768	491882	519964
	SENS Btu/h	358952	308598	260146	208280	437006	371574	316948	268394	217094	460152	428446	380822	327494	275406
	WATTS INPUT	43840	44366	44926	45602	44474	44438	45074	45690	46414	45022	44710	45160	45810	46544
	LVG dbt (°F)	47.9	51.7	55.3	59.4	47	51.9	56	59.7	63.8	50.2	52.6	56.2	60.2	64.2
	LVG wbt (°F)	45.8	50.2	54.7	59.2	44.7	50	54.6	59	63.6	43.8	49.6	54.3	58.8	63.3
14000	TOT Btu/h	420768	442664	468506	492972	457508	449518	472682	498982	525308	482124	482398	478496	503506	531062
	SENS Btu/h	387716	330796	273230	215588	457508	400226	338358	281740	224764	482124	482398	410208	351778	291466
	WATTS INPUT	44074	44578	45196	45870	44956	44736	45360	46014	46698	45554	45564	45504	46082	46846
	LVG dbt (°F)	49.9	53.6	57.3	61	50.4	54.1	58.1	61.7	65.4	53.8	53.7	58.4	62.2	66.1
	LVG wbt (°F)	47.5	51.9	56.3	60.9	46.3	51.7	56.3	60.6	65.1	45.5	50.7	56	60.5	65

Note: Cooling capacities shown are gross capacities. For net capacities, multiply blower bhp required times 2545 Btu per bph and subtract from total and sensible in tables.

Contact factory for additional information for operation in the shaded areas.

DX Cooling at 95°F Air on Outdoor (Condenser) Coil

cfm	dbt	Entering Air Temperature (°F)											
		90						95					
		59	63	67	71	75	80	59	63	67	71	75	80
6000	TOT Btu/h	367364	370204	394858	423014	451468	489112	384010	374988	397218	423986	453738	491202
	SENS Btu/h	367364	329952	303046	276918	248496	208684	384010	362462	336960	308084	281194	243104
	WATTS INPUT	43048	42990	43544	44136	44848	45688	43418	43062	43546	44206	44850	45830
	LVG dbt (°F)	34.5	40.1	44.2	48.1	52.4	58.6	36.9	40.2	44.1	48.4	52.5	58.4
	LVG wbt (°F)	32.5	38.6	43.1	47.6	52.3	58.4	31	38.2	42.9	47.5	52.1	58.2
7000	TOT Btu/h	394122	389438	414096	441634	470664	508650	412352	412318	417590	443806	473048	510884
	SENS Btu/h	394122	359230	329706	296852	264580	221440	412352	412318	367160	335046	302094	260634
	WATTS INPUT	43642	43432	43918	44620	45324	46170	44054	43912	44008	44612	45346	44734
	LVG dbt (°F)	38.9	43.5	47.3	51.5	55.7	61.5	41.6	41.6	47.4	51.6	55.9	61.2
	LVG wbt (°F)	35.1	41.5	46.1	50.7	55.3	61.3	33.7	39.9	45.8	50.5	55.1	61.1
8000	TOT Btu/h	416882	407762	429510	457298	485816	523204	436492	436704	433432	458360	488726	526186
	SENS Btu/h	416882	389332	354344	317698	279944	233576	436492	436704	394554	358688	323020	275584
	WATTS INPUT	44012	43778	44310	44928	45694	46628	44468	44474	44432	45016	45700	46732
	LVG dbt (°F)	42.7	45.9	49.8	54	58.3	63.8	45.5	45.5	50.3	54.3	58.4	63.8
	LVG wbt (°F)	37.2	43.6	48.4	53	57.6	63.6	35.9	41.9	48.1	52.8	57.4	63.4
9000	TOT Btu/h	436870	422776	443082	468790	498064	535774	457708	457944	449306	473002	500318	538482
	SENS Btu/h	436870	414488	377234	335278	294672	245806	457708	457944	422970	384636	341330	289956
	WATTS INPUT	44474	44128	44602	45268	45994	46896	44968	44974	44798	45314	46062	47052
	LVG dbt (°F)	46	48.2	52	56.2	60.3	65.5	48.9	48.8	52.4	56.2	60.6	65.8
	LVG wbt (°F)	38.9	45.4	50.2	54.9	59.5	65.3	37.7	43.6	49.8	54.6	59.3	65.1
10000	TOT Btu/h	454386	454626	454362	479574	508162	545742	476314	476568	462692	483846	510500	548532
	SENS Btu/h	454386	454626	399138	354806	308882	254478	476314	476568	447800	405986	360376	303798
	WATTS INPUT	44886	44896	44858	45462	46242	47154	45418	45424	45120	45636	46314	47320
	LVG dbt (°F)	48.8	48.8	53.8	57.8	62	66.9	51.8	51.8	54.4	58.2	62.3	67.4
	LVG wbt (°F)	40.4	46.1	51.7	56.3	60.9	66.7	39.3	45	51.3	56.1	60.8	66.6
12000	TOT Btu/h	483634	483890	473834	496516	523856	560284	507194	507482	507972	502764	527090	563990
	SENS Btu/h	483634	483890	440156	390968	336058	270302	507194	507482	507972	450472	398342	330228
	WATTS INPUT	45594	45602	45402	45900	46626	47624	46182	46188	46200	46040	46668	47744
	LVG dbt (°F)	53.4	53.4	56.7	60.4	64.6	69.6	56.7	56.6	56.6	61	64.9	70
	LVG wbt (°F)	42.8	48.2	54	58.6	63.2	68.9	41.8	47.4	52.8	58.4	63	68.7
14000	TOT Btu/h	506830	507108	490030	510006	535510	571346	532128	532438	532784	520300	541468	576524
	SENS Btu/h	506830	507108	476144	423066	361880	286082	532128	532438	532784	490526	433442	357302
	WATTS INPUT	46170	46176	45816	46234	46914	47944	46828	46836	46846	46530	47086	47996
	LVG dbt (°F)	57.2	57.1	59.2	62.6	66.6	71.5	60.5	60.5	60.5	63.2	66.9	71.9
	LVG wbt (°F)	44.7	49.9	55.6	60.3	64.8	70.4	43.8	49.1	54.4	60	64.6	70.2

Note: Cooling capacities shown are gross capacities. For net capacities, multiply blower bhp required times 2545 Btu per bph and subtract from total and sensible in tables.

Contact factory for additional information for operation in the shaded areas.

DX Cooling at 95°F Air on Outdoor (condenser) Coil																
cfm	dbt	Entering Air Temperature (°F)														
		100					105					110				
		59	63	67	71	75	80	63	67	71	75	80	67	71	75	80
wbt	59	63	67	71	75	80	63	67	71	75	80	67	71	75	80	
6000	TOT Btu/h	395594	395762	393192	417980	446978	485620	407220	395814	414178	440406	478772	418714	411968	435374	471412
	SENS Btu/h	395594	395762	363706	336766	308754	274530	407220	393724	365812	337658	303256	418714	394968	367032	332180
	WATTS INPUT	45968	45972	45794	46358	47066	47944	48690	48216	48708	49354	50254	51588	51198	51846	52700
	LVG dbt (°F)	40.2	40.2	45	49.1	53.3	58.5	43.4	45.5	49.7	54	59.2	46.7	50.3	54.5	59.8
	LVG wbt (°F)	29.8	36.4	43.1	47.8	52.5	58.4	35.3	42.8	48	52.8	58.7	41	48.1	53	59
7000	TOT Btu/h	424984	425186	416196	438538	466110	504278	437646	437642	434306	461028	497718	450134	450170	455486	488806
	SENS Btu/h	424984	425186	400262	368356	335282	294332	437646	437642	401136	371308	329420	450134	450170	403102	362188
	WATTS INPUT	46650	46654	46260	46852	47532	48502	49422	49244	49208	49798	50744	52374	52178	52362	53246
	LVG dbt (°F)	44.9	44.9	48.1	52.3	56.6	61.9	48.3	48.3	53	56.9	62.3	51.7	51.7	57.8	63.1
	LVG wbt (°F)	32.6	38.9	45.8	50.7	55.4	61.3	38	44.4	50.8	55.6	61.6	43.5	49.8	55.8	61.9
8000	TOT Btu/h	450000	450232	438072	455754	481064	519304	463524	463808	453892	477438	512384	476828	477182	473650	504910
	SENS Btu/h	450000	450232	434370	398806	360672	314344	463524	463808	434984	401246	354514	476828	477182	439210	393358
	WATTS INPUT	47090	47096	46772	47200	47902	48894	49888	49896	49690	50220	51134	52868	52882	52804	53688
	LVG dbt (°F)	49	49	50.8	54.8	59.1	64.4	52.4	52.4	55.7	59.5	64.8	55.9	55.9	60.2	65.4
	LVG wbt (°F)	35	41.1	47.8	52.9	57.7	63.5	40.2	46.3	52.9	57.8	63.7	45.6	51.7	57.9	63.9
9000	TOT Btu/h	471990	472248	472542	468596	495406	531312	486270	486584	474146	490086	524072	500286	500676	489244	519002
	SENS Btu/h	471990	472248	472542	425662	388046	333640	486270	486584	469628	428954	378846	500286	500676	470574	423482
	WATTS INPUT	47632	47638	47648	47582	48188	49214	50474	50482	50130	50618	51454	53502	53514	53260	53990
	LVG dbt (°F)	52.4	52.4	52.4	57.1	60.9	66.4	56	56	57.7	61.8	66.8	59.6	59.5	62.6	67.3
	LVG wbt (°F)	36.9	42.8	48.7	54.7	59.4	65.3	42	48	54.4	59.5	65.4	47.3	53.2	59.5	65.5
10000	TOT Btu/h	491270	491548	491862	482852	506792	542008	506202	506538	506934	502192	534622	520828	521238	521728	529910
	SENS Btu/h	491270	491548	491862	453102	411432	353688	506202	506538	506934	458260	403494	520828	521238	521728	451484
	WATTS INPUT	48118	48126	48134	47956	48480	49426	51002	51012	51026	50848	51816	54074	54086	54106	54300
	LVG dbt (°F)	55.4	55.4	55.4	58.9	62.7	67.9	59.1	59.1	59	63.4	68.4	62.8	62.7	62.7	69
	LVG wbt (°F)	38.5	44.3	50.1	56.1	60.8	66.7	43.6	49.4	55.1	60.9	66.8	48.7	54.5	60.2	66.9
12000	TOT Btu/h	523262	523572	523918	524486	524222	557220	539474	539848	540274	524836	551686	555076	555526	556064	549736
	SENS Btu/h	523262	523572	523918	524486	455478	389964	539474	539848	540274	509128	447356	555076	555526	556064	504674
	WATTS INPUT	48954	48962	48972	48980	48978	49846	51918	51928	51942	51584	52320	55068	55082	55100	54970
	LVG dbt (°F)	60.4	60.4	60.4	60.4	65.6	70.5	64.2	64.2	64.2	66.5	71.2	68	68	68	71.9
	LVG wbt (°F)	41.2	46.7	52.2	57.7	63	68.8	46.1	51.7	57.2	63	68.8	51.1	56.6	62.1	68.8
14000	TOT Btu/h	549070	549402	549776	550382	540768	569568	565892	566290	566732	567438	564730	582238	582710	583422	571280
	SENS Btu/h	549070	549402	549776	550382	497938	425474	565892	566290	566732	567438	490036	582238	582710	583422	558414
	WATTS INPUT	49668	49678	49688	49684	49484	50282	52698	52710	52722	52712	52698	55924	55940	55918	55520
	LVG dbt (°F)	64.4	64.4	64.4	64.3	67.7	72.4	68.3	68.3	68.3	68.2	73.3	72.3	72.2	72.2	73.8
	LVG wbt (°F)	43.2	48.6	53.9	59.2	64.6	70.3	48	53.4	58.7	63.9	70.3	52.9	58.3	63.5	70.1

Note: Cooling capacities shown are gross capacities. For net capacities, multiply blower bhp required times 2545 Btu per bph and subtract from total and sensible in tables.

Contact factory for additional information for operation in the shaded areas.

50 HZ Capacity

At full rated (60Hz) evaporator cfm, use these multipliers:
 Total Capacity x 0.91
 Sensible Capacity x 0.95
 Watts x 0.85

Correction Factor Multiplier For Other Outdoor Air Ambient

Temperature (°F dbt)	85	90	95
Total Capacity	1.05	1.03	1.00
Sensible Capacity	1.03	1.02	1.00
Watts	0.95	0.98	1.00

Electric Heat Performance

kW	60	70	80	90	100	110	120	140	160	180	200	220	240
MBtu/h	204.8	238.9	273.0	307.2	341.3	375.4	409.6	477.8	546.1	614.3	682.6	750.9	819.1
cfm	Temperature Rise												
6000	37.7	44.0	50.3	56.6	62.9	69.2	75.5	NA	NA	NA	NA	NA	NA
7000	31.4	36.7	41.9	47.2	52.4	57.7	62.9	73.4	NA	NA	NA	NA	NA
8000	27.0	31.4	36.0	40.4	45.0	49.4	53.9	62.9	71.9	NA	NA	NA	NA
9000	22.2	25.9	29.6	33.3	37.0	40.7	44.4	51.8	59.2	66.6	74	NA	NA
10000	18.9	22.0	25.1	28.3	31.4	34.6	37.7	44.0	50.3	56.6	62.9	69.2	75.5
12000	15.7	18.3	21.0	23.6	26.2	28.8	31.4	36.7	41.9	47.2	52.4	57.7	62.9
14000	13.5	15.7	18.0	20.2	22.5	24.7	27.0	31.4	35.9	40.4	44.9	49.4	53.9
	Current Draw (Amps)												
208v 1phase	288.5	—	—	—	—	—	—	—	—	—	—	—	—
208v 3 phase	166.5	180.4	222.1	249.8	272.6	—	—	—	—	—	—	—	—
240v 1 phase	250.0	270.8	—	—	—	—	—	—	—	—	—	—	—
240v 3 phase	144.3	156.4	192.5	216.5	240.6	264.6	288.7	—	—	—	—	—	—
480v 3 phase	72.2	78.2	96.2	108.3	120.3	132.3	144.3	168.4	192.5	216.5	240.6	264.6	288.7

Notes: Maximum temperature rise 75°F

Minimum circuit ampacity for wiring sizing

For unit less supplemental electric heat: Use unit values.

For supplemental electric heat: Use values from Electric Heat Performance table.

Minimum circuit ampacity = [(Larger of comp. RLA or fan motor FLA + electric heater amps) x 1.25 + FLA of all other motors & compressors].

Maximum over current protection

For units less supplemental electric heat: Use unit values.

For unit with supplemental electric heat:

Maximum fuse size = (2.25 x compressor RLA) + FLA of all other motors and compressors + electric heater amps). Select the fuse = to or next lower than calculate amperage from the following standard fuse sizes: 15, 20, 25, 30, 35, 40, 45, 50, 60, 70, 80, 90, 100, 110, 125, 150, 200, 225, 250, and 300.

In some instances with relatively large electric heat loads, the value computed for max. fuse size will be less than the MCA. In this situation, the max. fuse size is the same as MCA or next higher fuse size.

Gas Heat Performance

Btu/h Input	300,000	350,000	400,000	500,000	600,000	700,000	800,000	1,000,000	1,200,000	1,400,000	1,600,000
Output	240,000	280,000	320,000	400,000	480,000	560,000	640,000	800,000	960,000	1,120,000	1,280,000
cfm	Temperature Rise										
6000	44	51	59	73	88	103	NA	NA	NA	NA	NA
7000	36	43	49	61	73	86	98	NA	NA	NA	NA
8000	31	36	42	52	63	73	84	105	NA	NA	NA
9000	26	30	34	43	52	60	69	86	104	NA	NA
10000	NA	25	29	36	44	51	59	73	88	103	NA
12000	NA	NA	24	30	36	43	49	61	73	86	98
14000	NA	NA	NA	26	31	36	42	52	63	73	84

1. Furnace must be constructed of 439 S.S. for temp. rises above 90°Fdbt.
2. Furnace for 100% outside air system must be either 409 or 439 S.S.
3. Supply duct temperatures must not exceed 160°F dbt.
4. Maximum 439 S.S. temperature rise 105°Fdbt

Hydronic Heat Performance

cfm	1 Row Steam Coil		2 Row Steam Coil		1 Row Hot Water Coil				2 Row Hot Water Coil			
	Heating Capacity Mbtu/h*	Leaving Air Temp. dbt °F	Heating Capacity Mbtu/h H*	Leaving Air Temp. dbt °F	Heating Capacity Mbtu/h *	Leaving Air Temp. dbt °F	gpm	P.D FT. H ₂ O	Heating Capacity Mbtu/h **	Leaving Air Temp. dbt °F	gpm	P.D FT. H ₂ O
6000	415.2	133.5	654.8	170.2	321.2	118.9	33.0	0.5	542.2	152.5	55.7	1.8
7000	456.2	129.8	730.4	165.8	351.3	115.8	36.1	0.6	604.1	148.8	62.1	2.2
8000	493.9	126.6	800.9	161.9	379.0	113.3	39.0	0.7	662.0	145.6	68.0	2.7
9000	528.8	124.0	867.0	158.5	404.6	111.1	41.6	0.8	715.9	142.6	73.5	3.1
10000	561.3	121.5	929.1	155.3	428.5	109.1	44.1	0.9	766.9	140.0	78.8	3.5
12000	619.9	117.4	1043.8	149.8	472.0	105.9	48.5	1.0	860.1	135.5	88.4	4.4
14000	671.9	114.0	1147.5	145.2	511.2	103.3	52.5	1.2	946.0	131.7	97.2	5.3

*Capacity based on 2 psig steam and 70°F dbt entering air.

** Capacity based on 200°F dbt entering water, 180°F dbt leaving water and 70°F dbt entering air.

Hot Water Coil Correction Factors

Entering water Temp. °F dbt	Entering Air Temp.			
	40	50	60	70
160°	0.96	0.90	0.82	0.74
180°	1.08	1.02	0.95	0.87
200°	1.23	1.16	1.08	1.00

Steam Coil Correction Factors

Entering Air Temp. °F dbt	Steam Pressure		
	2 PSIG	5 PSIG	
40°	1.21	1.25	
50°	1.13	1.18	
60°	1.06	1.11	
70°	1.00	1.05	

Energy Conservation Wheel Performance

ECW604 4" Deep Outside air cfm = return air cfm
Return air °F = 75 dbt / 63 wbt

cfm	dbt	110				105					100					
	wbt	67.0	71.0	75.0	80.0	63.0	67.0	71.0	75.0	80.0	59.0	63.0	67.0	71.0	75.0	80.0
2500 Static 0.39	Total MBtu/h	*	*	94.9	143	*	*	*	95.0	143	*	*	*	60.4	95.2	144
	SENS. MBtu/h	82.1	82.1	82.1	82.1	70.4	70.4	70.4	70.4	70.4	58.6	58.6	58.6	58.6	58.6	58.6
	LVG dbt (°F)	79.6	79.6	79.6	79.6	78.9	78.9	78.9	78.9	78.9	78.3	78.3	78.3	78.3	78.3	78.3
	LVG wbt (°F)	63.5	64.2	64.9	65.9	62.9	63.5	64.2	65.0	66.0	62.3	62.9	63.6	64.2	65.0	66.0
3300 Static 0.51	Total MBtu/h	*	*	120	180	*	*	*	120	180	*	*	*	76.2	120	180
	SENS. MBtu/h	104	104	104	104	88.8	88.8	88.8	88.8	88.8	74.0	74.0	74.0	74.0	74.0	74.0
	LVG dbt (°F)	80.9	80.9	80.9	80.9	80.1	80.1	80.1	80.1	80.1	79.2	79.2	79.2	79.2	79.2	79.2
	LVG wbt (°F)	63.6	64.5	65.4	66.7	62.8	63.7	64.5	65.5	66.7	62.1	62.9	63.7	64.6	65.5	66.8
4100 Static 0.64	Total MBtu/h	*	*	142	213	*	*	*	142	213	*	*	*	90.6	142	213
	SENS. MBtu/h	123	123	123	123	106	106	106	106	106	88.0	88.0	88.0	88.0	88.0	88.0
	LVG dbt (°F)	82.2	82.2	82.2	82.2	81.2	81.2	81.2	81.2	81.2	80.1	80.1	80.1	80.1	80.1	80.1
	LVG wbt (°F)	63.7	64.7	65.9	67.4	62.7	63.7	64.8	66.0	67.5	61.9	62.8	63.8	64.9	66.0	67.5
4900 Static 0.76	Total MBtu/h	*	*	162	243	*	*	*	162	243	*	*	*	104	162	243
	SENS. MBtu/h	141	141	141	141	121	121	121	121	121	101	101	101	101	101	101
	LVG dbt (°F)	83.4	83.4	83.4	83.4	82.2	82.2	82.2	82.2	82.2	81.0	81.0	81.0	81.0	81.0	81.0
	LVG wbt (°F)	63.8	65.0	66.4	68.1	62.7	63.8	65.1	66.4	68.2	61.7	62.8	63.9	65.2	66.5	68.2
5700 Static 0.88	Total MBtu/h	*	*	180	270	*	*	*	180	269	*	*	*	115	179	269
	SENS. MBtu/h	157	157	157	157	134	134	134	134	134	112	112	112	112	112	112
	LVG dbt (°F)	84.5	84.5	84.5	84.5	83.2	83.2	83.2	83.2	83.2	81.8	81.8	81.8	81.8	81.8	81.8
	LVG wbt (°F)	63.9	65.3	66.7	68.8	62.6	63.9	65.3	66.9	68.8	61.5	62.7	64.0	65.4	66.9	68.9
6800 Static 1.06	Total MBtu/h	*	*	202	301	*	*	*	202	300	*	*	*	130	201	300
	SENS. MBtu/h	176	176	176	176	151	151	151	151	151	126	126	126	126	126	126
	LVG dbt (°F)	86.0	86.0	86.0	86.0	84.4	84.4	84.4	84.4	84.4	82.9	82.9	82.9	82.9	82.9	82.9
	LVG wbt (°F)	64.0	65.6	67.3	69.6	62.6	64.1	65.7	67.4	69.6	61.2	62.7	64.2	65.8	67.5	69.7
7600 Static 1.18	Total MBtu/h	*	*	216	321	*	*	*	215	320	*	*	*	139	214	319
	SENS. MBtu/h	189	189	189	189	162	162	162	162	162	135	135	135	135	135	135
	LVG dbt (°F)	87.0	87.0	87.0	87.0	85.3	85.3	85.3	85.3	85.3	83.6	83.6	83.6	83.6	83.6	83.6
	LVG wbt (°F)	64.1	65.8	67.7	70.1	62.5	64.2	65.9	67.8	70.2	61.1	62.6	64.3	66.0	67.9	70.3

Note: Performance based on exhaust air conditions of 75° F/dbt, 63° F/wbt cooling and 70° F/dbt, 58° F/wbt heating.

* Moisture has been added to the supply air stream from the exhaust air stream.

Energy Conservation Wheel Performance

ECW604 4" Deep

Outside air cfm = return air cfm
Return air °F = 75 dbt / 63 wbt

Outside air cfm = return air cfm
Return air °F = 70 dbt / 58 wbt

cfm	dbt		95						90						Heating Mode				
	wbt		59.0	63.0	67.0	71.0	75.0	80.0	59.0	63.0	67.0	71.0	75.0	80.0	-10	0	10	20	30
2500 Static 0.39	Total MBtu/h	*	*	*	60.5	95.4	144	*	*	*	60.6	95.5	144	-	-	-	-	-	
	SENS. MBtu/h	46.9	46.9	46.9	46.9	46.9	46.9	35.2	35.2	35.2	35.2	35.2	35.2	187.6	164.2	140.7	117.3	93.8	
	LVG dbt (°F)	77.6	77.6	77.6	77.6	77.6	77.6	77.0	77.0	77.0	77.0	77.0	77.0	59.5	60.8	62.1	63.4	64.7	
	LVG wbt (°F)	62.4	63.0	63.6	64.3	65.0	66.0	62.4	63.0	63.6	64.3	65.1	66.1	-	-	-	-	-	
3300 Static 0.51	Total MBtu/h	*	*	*	76.2	120	181	*	*	*	76.2	120	181	-	-	-	-	-	
	SENS. MBtu/h	59.2	59.2	59.2	59.2	59.2	59.2	44.4	44.4	44.4	44.4	44.4	44.4	236.9	207.3	177.7	148.0	118.4	
	LVG dbt (°F)	78.4	78.4	78.4	78.4	78.4	78.4	77.5	77.5	77.5	77.5	77.5	77.5	56.5	58.2	59.9	61.5	63.2	
	LVG wbt (°F)	62.2	62.9	63.7	64.6	65.6	66.8	62.2	63.0	63.8	64.7	65.6	66.9	-	-	-	-	-	
4100 Static 0.64	Total MBtu/h	*	*	*	90.4	142	213	*	*	*	90.3	142	213	-	-	-	-	-	
	SENS. MBtu/h	70.4	70.4	70.4	70.4	70.4	70.4	52.8	52.8	52.8	52.8	52.8	52.8	281.5	246.3	211.2	176.0	140.8	
	LVG dbt (°F)	79.1	79.1	79.1	79.1	79.1	79.1	78.1	78.1	78.1	78.1	78.1	78.1	53.6	55.6	57.5	59.7	61.8	
	LVG wbt (°F)	61.9	62.9	63.9	64.9	66.1	67.6	62.0	62.9	63.9	65.0	66.1	67.7	-	-	-	-	-	
4900 Static 0.76	Total MBtu/h	*	*	*	103	161	242	*	*	*	103	161	242	-	-	-	-	-	
	SENS. MBtu/h	80.5	80.5	80.5	80.5	80.5	80.5	60.4	60.4	60.4	60.4	60.4	60.4	321.9	281.7	241.4	201.2	161.0	
	LVG dbt (°F)	79.8	79.8	79.8	79.8	79.8	79.8	78.6	78.6	78.6	78.6	78.6	78.6	50.8	53.2	55.6	58.0	60.4	
	LVG wbt (°F)	61.7	62.8	64.0	65.2	66.5	68.3	61.8	62.9	64.1	65.3	66.6	68.4	-	-	-	-	-	
5700 Static 0.88	Total MBtu/h	*	*	*	115	179	268	*	*	*	114	178	268	-	-	-	-	-	
	SENS. MBtu/h	89.6	89.6	89.6	89.6	89.6	89.6	67.2	67.2	67.2	67.2	67.2	67.2	358.4	313.6	268.8	224.0	179.2	
	LVG dbt (°F)	80.4	80.4	80.4	80.4	80.4	80.4	79.1	79.1	79.1	79.1	79.1	79.1	48.2	50.9	53.7	56.4	59.1	
	LVG wbt (°F)	61.5	62.8	64.1	65.5	67.0	69.0	61.6	62.9	64.2	65.6	67.1	69.0	-	-	-	-	-	
6800 Static 1.06	Total MBtu/h	*	*	*	129	200	299	*	*	*	127	199	298	-	-	-	-	-	
	SENS. MBtu/h	101	101	101	101	101	101	75.5	75.5	75.5	75.5	75.5	75.5	402.7	352.3	302.0	251.7	201.3	
	LVG dbt (°F)	81.3	81.3	81.3	81.3	81.3	81.3	79.7	79.7	79.7	79.7	79.7	79.7	44.8	48.0	51.1	54.3	57.4	
	LVG wbt (°F)	61.3	62.7	64.3	65.9	67.6	69.8	61.4	62.8	64.4	66.0	67.6	69.9	-	-	-	-	-	
7600 Static 1.18	Total MBtu/h	*	*	*	137	213	318	*	*	*	136	211	316	-	-	-	-	-	
	SENS. MBtu/h	108	108	108	108	108	108	80.8	80.8	80.8	80.8	80.8	80.8	431.0	377.2	323.3	269.4	215.5	
	LVG dbt (°F)	81.9	81.9	81.9	81.9	81.9	81.9	80.2	80.2	80.2	80.2	80.2	80.2	42.5	46.0	49.4	52.8	56.3	
	LVG wbt (°F)	61.2	62.7	64.4	66.1	67.9	70.4	61.3	62.8	64.5	66.2	68.0	70.4	-	-	-	-	-	

Note: Performance based on exhaust air conditions of 75° F/dbt, 63° F/wbt cooling and 70°F/dbt, 58°F/wbt heating.

* Moisture has been added to the supply air stream from the exhaust air stream.

Energy Conservation Wheel Performance

ECW664 4" Deep Outside air cfm = return air cfm
 Return air °F = 75 dbt / 63 wbt

cfm	dbt	110				105					100					
	wbt	67.0	71.0	75.0	80.0	63.0	67.0	71.0	75.0	80.0	59.0	63.0	67.0	71.0	75.0	80.0
3000 Static 0.38	Total MBtu/h	*	*	114	172	*	*	*	114	172	*	*	*	72.6	114	173
	SENS. MBtu/h	98.7	98.7	98.7	98.7	84.6	84.6	84.6	84.6	84.6	70.5	70.5	70.5	70.5	70.5	70.5
	LVG dbt (°F)	79.6	79.6	79.6	79.6	78.9	78.9	78.9	78.9	78.9	78.3	78.3	78.3	78.3	78.3	78.3
	LVG wbt (°F)	63.5	64.2	64.9	65.9	62.9	63.5	64.2	64.9	65.9	62.4	62.9	63.6	64.2	65.0	66.0
4100 Static 0.53	Total MBtu/h	*	*	148	223	*	*	*	148	223	*	*	*	94.3	148	223
	SENS. MBtu/h	128	128	128	128	110	110	110	110	110	91.6	91.6	91.6	91.6	91.6	91.6
	LVG dbt (°F)	81.1	81.1	81.1	81.1	80.2	80.2	80.2	80.2	80.2	79.3	79.3	79.3	79.3	79.3	79.3
	LVG wbt (°F)	63.6	64.5	65.5	66.8	62.8	63.7	64.6	65.5	66.8	62.1	62.9	63.7	64.6	65.6	66.9
5200 Static 0.67	Total MBtu/h	*	*	178	268	*	*	*	178	267	*	*	*	114	178	267
	SENS. MBtu/h	155	155	155	155	133	133	133	133	133	110	110	110	110	110	110
	LVG dbt (°F)	82.5	82.5	82.5	82.5	81.4	81.4	81.4	81.4	81.4	80.3	80.3	80.3	80.3	80.3	80.3
	LVG wbt (°F)	63.7	64.8	66.0	67.6	62.7	63.8	64.9	66.1	67.7	61.8	62.8	63.9	65.0	66.1	67.7
6300 Static 0.81	Total MBtu/h	*	*	205	307	*	*	*	205	307	*	*	*	131	204	306
	SENS. MBtu/h	178	178	178	178	153	153	153	153	153	127	127	127	127	127	127
	LVG dbt (°F)	83.8	83.8	83.8	83.8	82.6	82.6	82.6	82.6	82.6	81.3	81.3	81.3	81.3	81.3	81.3
	LVG wbt (°F)	63.8	65.1	66.5	68.4	62.7	63.9	65.2	66.6	68.4	61.6	62.7	63.9	65.3	66.6	68.5
7400 Static 0.95	Total MBtu/h	*	*	229	342	*	*	*	228	341	*	*	*	146	227	340
	SENS. MBtu/h	199	199	199	199	171	171	171	171	171	142	142	142	142	142	142
	LVG dbt (°F)	85.1	85.1	85.1	85.1	83.6	83.6	83.6	83.6	83.6	82.2	82.2	82.2	82.2	82.2	82.2
	LVG wbt (°F)	63.9	65.4	67.0	69.1	62.6	64.0	65.5	67.1	69.1	61.4	62.7	64.1	65.6	67.1	69.2
8500 Static 1.09	Total MBtu/h	*	*	250	372	*	*	*	249	371	*	*	*	160	248	370
	SENS. MBtu/h	218	218	218	218	187	187	187	187	187	155	155	155	155	155	155
	LVG dbt (°F)	86.3	86.3	86.3	86.3	84.7	84.7	84.7	84.7	84.7	83.1	83.1	83.1	83.1	83.1	83.1
	LVG wbt (°F)	64.0	65.7	67.4	69.7	62.6	64.1	65.7	67.5	69.8	61.2	62.7	64.2	65.9	67.6	69.9
9600 Static 1.23	Total MBtu/h	*	*	269	398	*	*	*	267	397	*	*	*	172	265	395
	SENS. MBtu/h	234	234	234	234	201	201	201	201	201	167	167	167	167	167	167
	LVG dbt (°F)	87.4	87.4	87.4	87.4	85.6	85.6	85.6	85.6	85.6	83.9	83.9	83.9	83.9	83.9	83.9
	LVG wbt (°F)	64.1	65.9	67.8	70.3	62.5	64.2	66.0	67.9	70.4	61.0	62.6	64.3	66.1	68.0	70.5

Note: Performance based on exhaust air conditions of 75° F/dbt, 63° F/wbt cooling and 70°F/dbt, 58°F/wbt heating.

* Moisture has been added to the supply air stream from the exhaust air stream.

Energy Conservation Wheel Performance

ECW664 4" Deep

Outside air cfm = return air cfm

Return air °F = 75 dbt / 63 wbt

Outside air cfm = return air cfm

Return air °F = 70 dbt / 58 wbt

cfm	dbt wbt	95						90						Heating Mode				
		59.0	63.0	67.0	71.0	75.0	80.0	59.0	63.0	67.0	71.0	75.0	80.0	-10	0	10	20	30
3000 Static 0.38	Total MBtu/h	*	*	*	72.7	115	173	*	*	*	72.9	115	173	-	-	-	-	-
	SENS. MBtu/h	56.4	56.4	56.4	56.4	56.4	56.4	42.3	42.3	42.3	42.3	42.3	42.3	225.5	197.3	169.1	140.9	112.8
	LVG dbt (°F)	77.6	77.6	77.6	77.6	77.6	77.6	77.0	77.0	77.0	77.0	77.0	77.0	59.6	60.9	62.2	63.5	64.8
	LVG wbt (°F)	62.4	63.0	63.6	64.3	65.0	66.0	62.4	63.0	63.6	64.3	65.0	66.1	-	-	-	-	-
4100 Static 0.53	Total MBtu/h	*	*	*	94.3	148	223	*	*	*	94.3	148	223	-	-	-	-	-
	SENS. MBtu/h	73.2	73.2	73.2	73.2	73.2	73.2	54.9	54.9	54.9	54.9	54.9	54.9	293.0	256.4	219.7	183.1	146.5
	LVG dbt (°F)	78.5	78.5	78.5	78.5	78.5	78.5	77.6	77.6	77.6	77.6	77.6	77.6	56.2	57.9	59.6	61.4	63.1
	LVG wbt (°F)	62.2	62.9	63.8	64.6	65.6	66.9	62.2	63.0	63.8	64.7	65.7	67.0	-	-	-	-	-
5200 Static 0.67	Total MBtu/h	*	*	*	113	178	267	*	*	*	113	178	267	-	-	-	-	-
	SENS. MBtu/h	88.3	88.3	88.3	88.3	88.3	88.3	66.3	66.3	66.3	66.3	66.3	66.3	353.3	309.2	265.0	220.8	176.7
	LVG dbt (°F)	79.3	79.3	79.3	79.3	79.3	79.3	78.2	78.2	78.2	78.2	78.2	78.2	52.9	55.1	57.2	59.3	61.5
	LVG wbt (°F)	61.9	62.9	63.9	65.0	66.2	67.8	62.0	62.9	64.0	65.1	66.2	67.8	-	-	-	-	-
6300 Static 0.81	Total MBtu/h	*	*	*	130	204	306	*	*	*	130	203	305	-	-	-	-	-
	SENS. MBtu/h	102	102	102	102	102	102	76.3	76.3	76.3	76.3	76.3	76.3	407.2	356.3	305.4	254.5	203.6
	LVG dbt (°F)	80.0	80.0	80.0	80.0	80.0	80.0	78.8	78.8	78.8	78.8	78.8	78.8	49.8	52.4	54.9	57.4	59.9
	LVG wbt (°F)	61.7	62.8	64.1	65.3	66.7	68.6	61.7	62.9	64.1	65.4	66.8	68.6	-	-	-	-	-
7400 Static 0.95	Total MBtu/h	*	*	*	145	226	339	*	*	*	145	226	339	-	-	-	-	-
	SENS. MBtu/h	114	114	114	114	114	114	85.3	85.3	85.3	85.3	85.3	85.3	455.1	398.2	341.3	284.4	227.5
	LVG dbt (°F)	80.8	80.8	80.8	80.8	80.8	80.8	79.3	79.3	79.3	79.3	79.3	79.3	46.9	49.8	52.7	55.6	58.5
	LVG wbt (°F)	61.5	62.8	64.2	65.7	67.2	69.3	61.5	62.9	64.3	65.7	67.3	69.4	-	-	-	-	-
8500 Static 1.09	Total MBtu/h	*	*	*	159	246	368	*	*	*	157	245	367	-	-	-	-	-
	SENS. MBtu/h	124	124	124	124	124	124	93.3	93.3	93.3	93.3	93.3	93.3	497.6	435.4	373.2	311.0	248.8
	LVG dbt (°F)	81.4	81.4	81.4	81.4	81.4	81.4	79.8	79.8	79.8	79.8	79.8	79.8	44.2	47.4	50.7	53.9	57.1
	LVG wbt (°F)	61.3	62.7	64.3	65.9	67.7	70.0	61.4	62.8	64.4	66.0	67.7	70.0	-	-	-	-	-
9600 Static 1.23	Total MBtu/h	*	*	*	170	264	394	*	*	*	169	262	392	-	-	-	-	-
	SENS. MBtu/h	134	134	134	134	134	134	100	100	100	100	100	100	535.2	468.3	401.4	334.5	267.6
	LVG dbt (°F)	82.1	82.1	82.1	82.1	82.1	82.1	80.3	80.3	80.3	80.3	80.3	80.3	41.6	45.2	48.7	52.3	55.8
	LVG wbt (°F)	61.1	62.7	64.4	66.2	68.1	70.6	61.2	62.8	64.5	66.3	68.2	70.7	-	-	-	-	-

Note: Performance based on exhaust air conditions of 75° F/dbt, 63° F/wbt cooling and 70°F/dbt, 58°F/wbt heating.

* Moisture has been added to the supply air stream from the exhaust air stream.

Energy Conservation Wheel Performance

ECW726

6" Deep

Outside air cfm = return air cfm

Return air °F = 75 dbt / 63 wbt

cfm	dbt	110				105					100					
	wbt	67.0	71.0	75.0	80.0	63.0	67.0	71.0	75.0	80.0	59.0	63.0	67.0	71.0	75.0	80.0
4000 Static 0.53	Total MBtu/h	*	*	157	138	*	*	*	158	239	*	*	*	100	158	239
	SENS. MBtu/h	136	136	136	136	117	117	117	117	117	97.3	97.3	97.3	97.3	97.3	97.3
	LVG dbt (°F)	78.5	78.5	78.5	78.5	78.0	78.0	78.0	78.0	78.0	77.5	77.5	77.5	77.5	77.5	77.5
	LVG wbt (°F)	63.4	63.9	64.5	65.2	63.0	63.4	63.9	64.5	65.3	62.5	63.0	63.5	64.0	64.5	65.3
5000 Static 0.66	Total MBtu/h	*	*	192	290	*	*	*	192	290	*	*	*	122	193	291
	SENS. MBtu/h	166	166	166	166	142	142	142	142	142	118	118	118	118	118	118
	LVG dbt (°F)	79.3	79.3	79.3	79.3	78.7	78.7	78.7	78.7	78.7	78.1	78.1	78.1	78.1	78.1	78.1
	LVG wbt (°F)	63.5	64.1	64.8	65.7	62.9	63.5	64.1	64.8	65.8	62.4	62.9	63.5	64.2	64.9	65.8
6000 Static 0.79	Total MBtu/h	*	*	224	338	*	*	*	224	339	*	*	*	143	225	339
	SENS. MBtu/h	194	194	194	194	166	166	166	166	166	139	139	139	139	139	139
	LVG dbt (°F)	80.1	80.1	80.1	80.1	79.3	79.3	79.3	79.3	79.3	78.6	78.6	78.6	78.6	78.6	78.6
	LVG wbt (°F)	63.5	64.3	65.1	66.2	62.9	63.6	64.3	65.1	66.2	62.3	62.9	63.6	64.4	65.2	66.3
7000 Static 0.92	Total MBtu/h	*	*	255	384	*	*	*	255	384	*	*	*	162	255	384
	SENS. MBtu/h	221	221	221	221	189	189	189	189	189	158	158	158	158	158	158
	LVG dbt (°F)	80.8	80.8	80.8	80.8	80.0	80.0	80.0	80.0	80.0	79.2	79.2	79.2	79.2	79.2	79.2
	LVG wbt (°F)	63.6	64.5	65.4	66.6	62.8	63.6	64.5	65.4	66.7	62.1	62.9	63.7	64.5	65.5	66.7
8000 Static 1.05	Total MBtu/h	*	*	283	426	*	*	*	284	427	*	*	*	181	283	427
	SENS. MBtu/h	246	246	246	246	211	211	211	211	211	176	176	176	176	176	176
	LVG dbt (°F)	81.6	81.6	81.6	81.6	80.6	80.6	80.6	80.6	80.6	79.7	79.7	79.7	79.7	79.7	79.7
	LVG wbt (°F)	63.6	64.6	65.7	67.1	62.8	63.7	64.7	65.7	67.1	62.0	62.8	63.8	64.7	65.8	67.2
9000 Static 1.18	Total MBtu/h	*	*	311	467	*	*	*	310	467	*	*	*	198	310	466
	SENS. MBtu/h	269	269	269	269	231	231	231	231	231	192	192	192	192	192	192
	LVG dbt (°F)	82.3	82.3	82.3	82.3	81.2	81.2	81.2	81.2	81.2	80.2	80.2	80.2	80.2	80.2	80.2
	LVG wbt (°F)	63.7	64.8	65.9	67.5	62.7	63.7	64.9	66.0	67.5	61.9	62.8	63.8	64.9	66.1	67.6
10000 Static 1.31	Total MBtu/h	*	*	336	504	*	*	*	336	504	*	*	*	215	335	504
	SENS. MBtu/h	292	216	292	292	250	250	250	250	250	208	208	208	208	208	208
	LVG dbt (°F)	83.0	83.0	83.0	83.0	81.8	81.8	81.8	81.8	81.8	80.7	80.7	80.7	80.7	80.7	80.7
	LVG wbt (°F)	63.7	64.9	66.2	67.9	62.7	63.8	65.0	66.3	67.9	61.7	62.8	63.9	65.1	66.3	68.0

Note: Performance based on exhaust air conditions of 75° F/dbt, 63° F/wbt cooling and 70° F/dbt, 58° F/wbt heating.

* Moisture has been added to the supply air stream from the exhaust air stream.

Energy Conservation Wheel Performance

ECW726 6" Deep

Outside air cfm = return air cfm

Return air °F = 75 dbt / 63 wbt

Outside air cfm = return air cfm

Return air °F = 70 dbt / 58 wbt

cfm	dbt	95						90						Heating Mode				
	wbt	59.0	63.0	67.0	71.0	75.0	80.0	59.0	63.0	67.0	71.0	75.0	80.0	-10	0	10	20	30
4000 Static 0.53	Total MBtu/h	*	*	*	101	159	240	*	*	*	101	159	240	-	-	-	-	-
	SENS. MBtu/h	77.8	77.8	77.8	77.8	77.8	77.8	58.4	58.4	58.4	58.4	58.4	58.4	311.2	272.3	233.4	194.5	155.6
	LVG dbt (°F)	77.0	77.0	77.0	77.0	77.0	77.0	76.5	76.5	76.5	76.5	76.5	76.5	62.0	63.0	64.0	65.0	66.0
	LVG wbt (°F)	62.6	63.0	63.5	64.0	64.6	65.3	62.6	63.0	63.5	64.0	64.6	65.4	-	-	-	-	-
5000 Static 0.66	Total MBtu/h	*	*	*	122	193	291	*	*	*	123	193	292	-	-	-	-	-
	SENS. MBtu/h	94.8	94.8	94.8	94.8	94.8	94.8	71.1	71.1	71.1	71.1	71.1	71.1	379.2	331.8	284.4	237.0	189.6
	LVG dbt (°F)	77.4	77.4	77.4	77.4	77.4	77.4	76.8	76.8	76.8	76.8	76.8	76.8	60.2	61.4	62.7	63.9	65.1
	LVG wbt (°F)	62.4	63.0	63.6	64.2	64.9	65.8	62.5	63.0	63.6	64.2	64.9	65.9	-	-	-	-	-
6000 Static 0.79	Total MBtu/h	*	*	*	143	225	339	*	*	*	143	225	340	-	-	-	-	-
	SENS. MBtu/h	111	111	111	111	111	111	83.1	83.1	83.1	83.1	83.1	83.1	443.4	388.0	332.6	277.1	221.7
	LVG dbt (°F)	77.9	77.9	77.9	77.9	77.9	77.9	77.2	77.2	77.2	77.2	77.2	77.2	58.4	59.9	61.3	62.8	64.2
	LVG wbt (°F)	62.3	63.0	63.6	64.4	65.2	66.3	62.3	63.0	63.7	64.4	65.3	66.4	-	-	-	-	-
7000 Static 0.92	Total MBtu/h	*	*	*	162	255	385	*	*	*	162	255	385	-	-	-	-	-
	SENS. MBtu/h	126	126	126	126	126	126	94.5	94.5	94.5	94.5	94.5	94.5	504.2	441.2	378.1	315.1	252.1
	LVG dbt (°F)	78.3	78.3	78.3	78.3	78.3	78.3	77.5	77.5	77.5	77.5	77.5	77.5	56.7	58.4	60.0	61.7	63.3
	LVG wbt (°F)	62.2	62.9	63.7	64.6	65.5	66.8	62.2	63.0	63.8	64.6	65.6	66.8	-	-	-	-	-
8000 Static 1.05	Total MBtu/h	*	*	*	181	283	427	*	*	*	180	283	427	-	-	-	-	-
	SENS. MBtu/h	140	140	140	140	140	140	105	105	105	105	105	105	561.6	491.4	421.2	351.0	280.8
	LVG dbt (°F)	78.7	78.7	78.7	78.7	78.7	78.7	77.8	77.8	77.8	77.8	77.8	77.8	55.0	56.9	58.8	60.6	62.5
	LVG wbt (°F)	62.0	62.9	63.8	64.8	65.8	67.2	62.1	63.0	63.9	64.8	65.9	67.3	-	-	-	-	-
9000 Static 1.18	Total MBtu/h	*	*	*	198	310	466	*	*	*	197	310	466	-	-	-	-	-
	SENS. MBtu/h	154	154	154	154	154	154	115	115	115	115	115	115	615.8	538.9	461.9	384.9	307.9
	LVG dbt (°F)	79.2	79.2	79.2	79.2	79.2	79.2	78.1	78.1	78.1	78.1	78.1	78.1	53.4	55.4	57.5	59.6	61.7
	LVG wbt (°F)	61.9	62.9	63.9	65.0	66.1	67.7	62.0	62.9	63.9	65.0	66.2	67.7	-	-	-	-	-
10000 Static 1.31	Total MBtu/h	*	*	*	214.0	334.8	503.2	*	*	*	213	334	503	-	-	-	-	-
	SENS. MBtu/h	167	167	167	167	167	167	125	125	125	125	125	125	667.0	583.6	500.2	416.9	333.5
	LVG dbt (°F)	79.6	79.6	79.6	79.6	79.6	79.6	78.4	78.4	78.4	78.4	78.4	78.4	51.8	54.0	56.3	58.6	60.9
	LVG wbt (°F)	61.8	62.8	64.0	65.1	66.4	68.1	61.9	62.9	64.0	65.2	66.4	68.1	-	-	-	-	-

Note: Performance based on exhaust air conditions of 75° F/dbt, 63° F/wbt cooling and 70° F/dbt, 58° F/wbt heating.

* Moisture has been added to the supply air stream from the exhaust air stream.

Weights – lbs

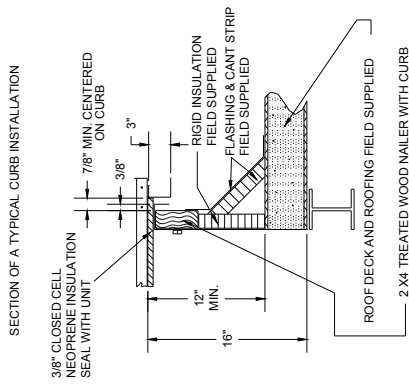
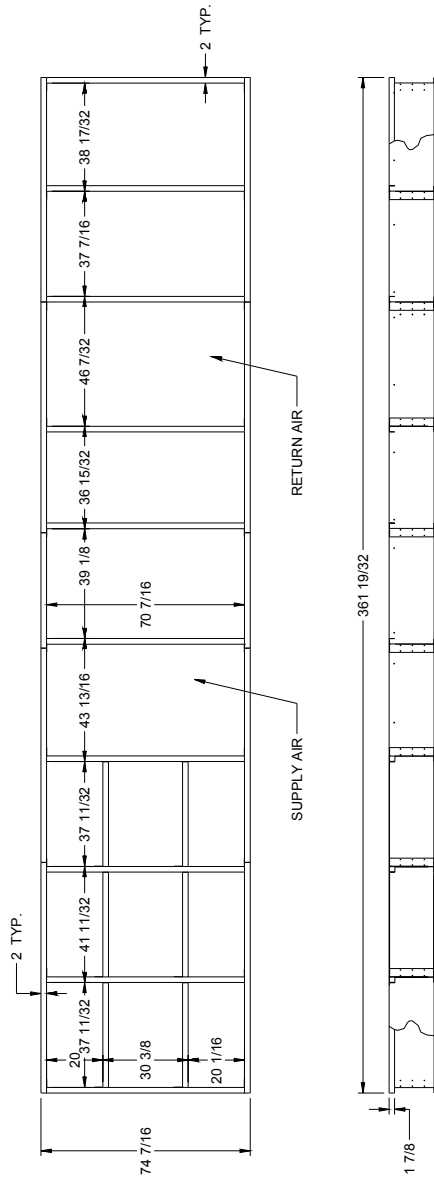
Standard Unit Weight	Economizer	1 Row Hydronic Heat Coil	2 Row Hydronic Heat Coil	4 Row Chilled Water Coil	6 Row Chilled Water Coil	1 Row Hot Gas Reheat Coil	1 Row Sub Cooling Coil
7600	202	118	173	319	452	44	44
Extended Unit Weight	Electric heat 120-240 kW	300 MBH Furnace	350 MBH Furnace	400 MBH Furnace	500 MBH Furnace	600 MBH Furnace	700 MBH Furnace
8800	57 - 114	275	300	320	510	550	600
800 MBH Furnace	1000 MBH Furnace	1200 MBH Furnace	1400 MBH Furnace	1600 MBH Furnace	ECW 604	ECW 664	ECW 726
630	1000	1050	1120	1200	470	590	670
Supply Fan and Motor	Return Fan and Motor	Exhaust Fan and Motor	Standard Unit Curb	Extended Unit Curb			
300	325	240	700	795			

Note: Base unit weight includes standard and extended cabinet and DX coil.

Add the weights of the options selected to the base unit weight for total unit weight.

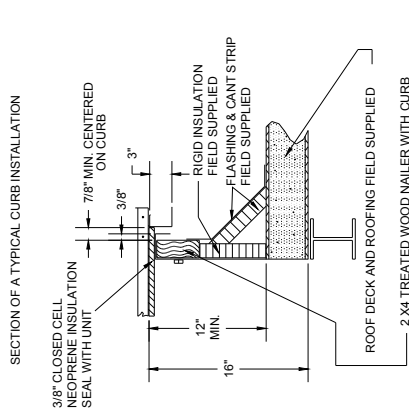
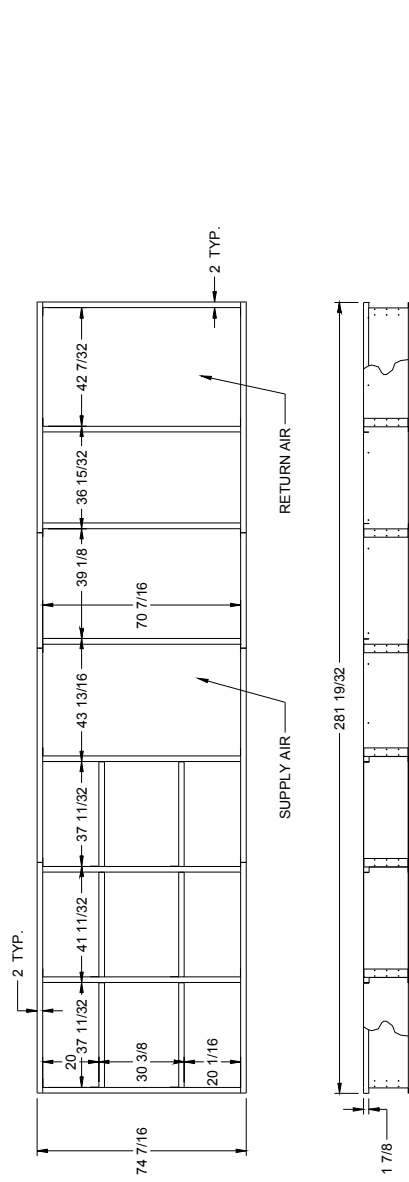
P/N 0851Y-1218

STANDARD CURB FOR VERTICAL RETURN AND SUPPLY DC MODEL WITH ECW OR POWER EXHAUST



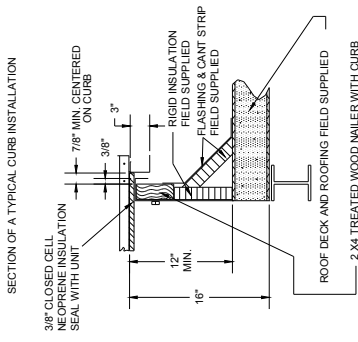
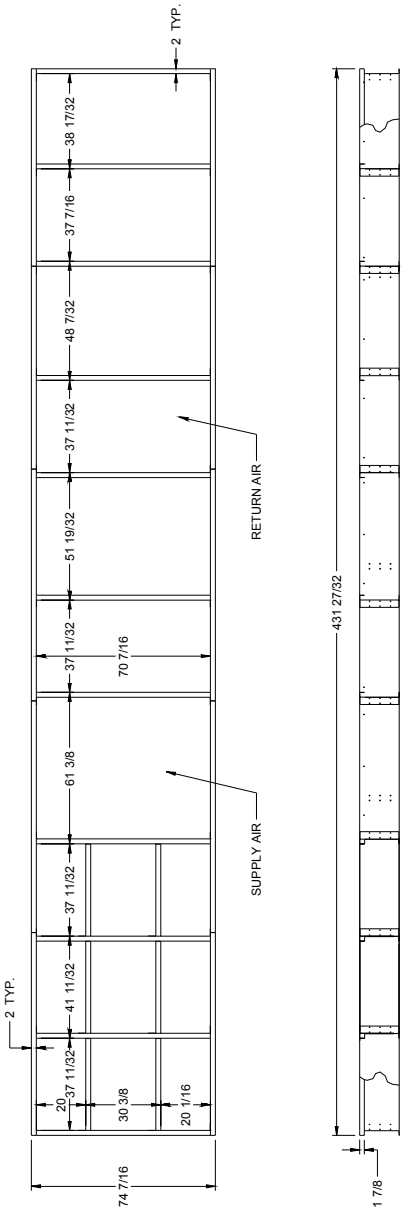
P/N 0851Y-1219

STANDARD CURB FOR VERTICAL RETURN AND SUPPLY DC MODEL



P/N 0851Y-1209

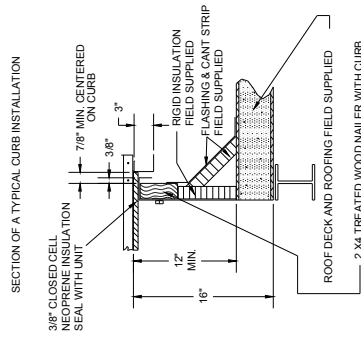
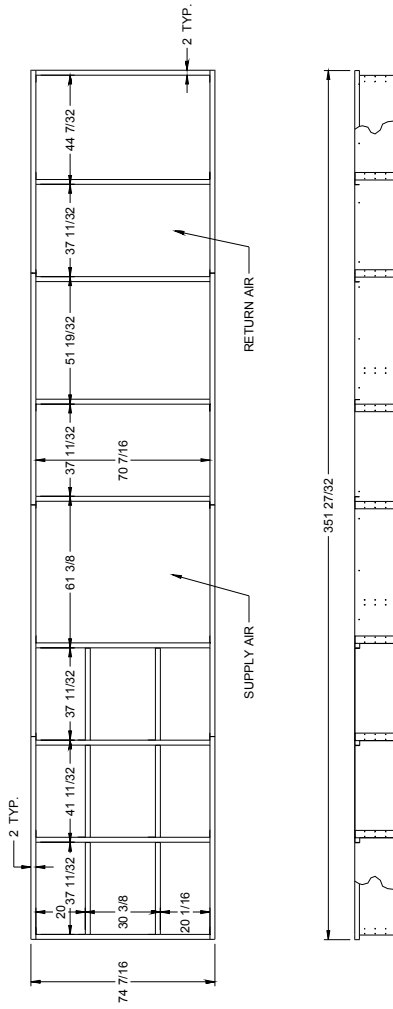
STANDARD CURB FOR VERTICAL RETURN AND SUPPLY DC MODEL WITH ECW OR POWER EXHAUST



NOTE:
FOR UNITS UP TO 1.6 MILLION BTUs (4 FURNACES)

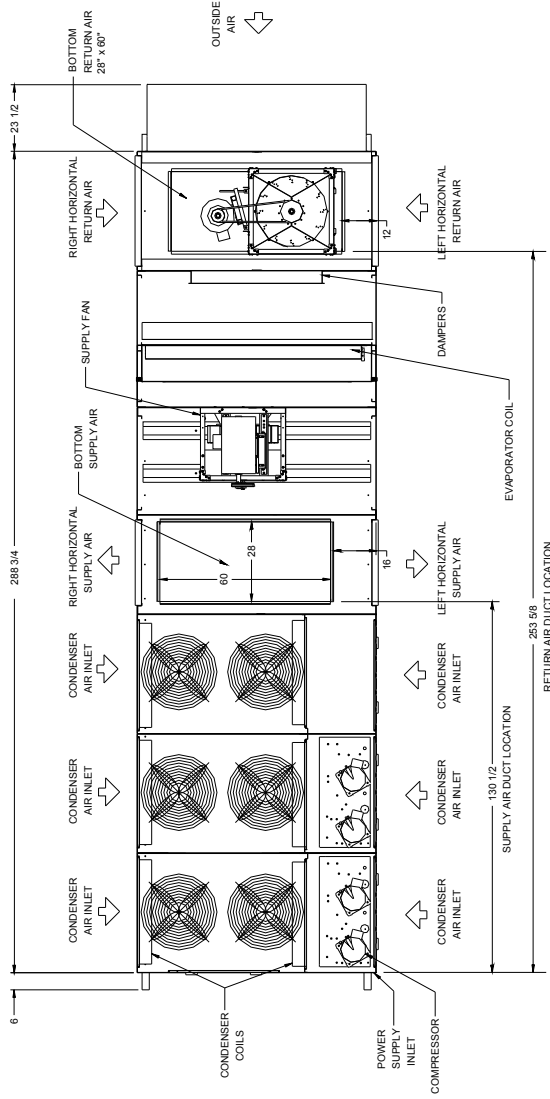
P/N 0851Y-1211

STANDARD CURB FOR VERTICAL RETURN AND SUPPLY DC MODEL

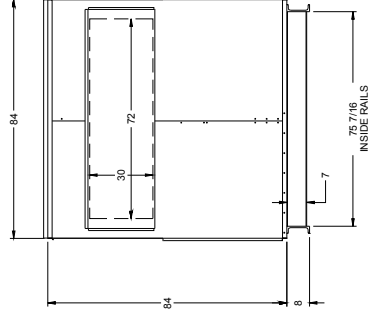
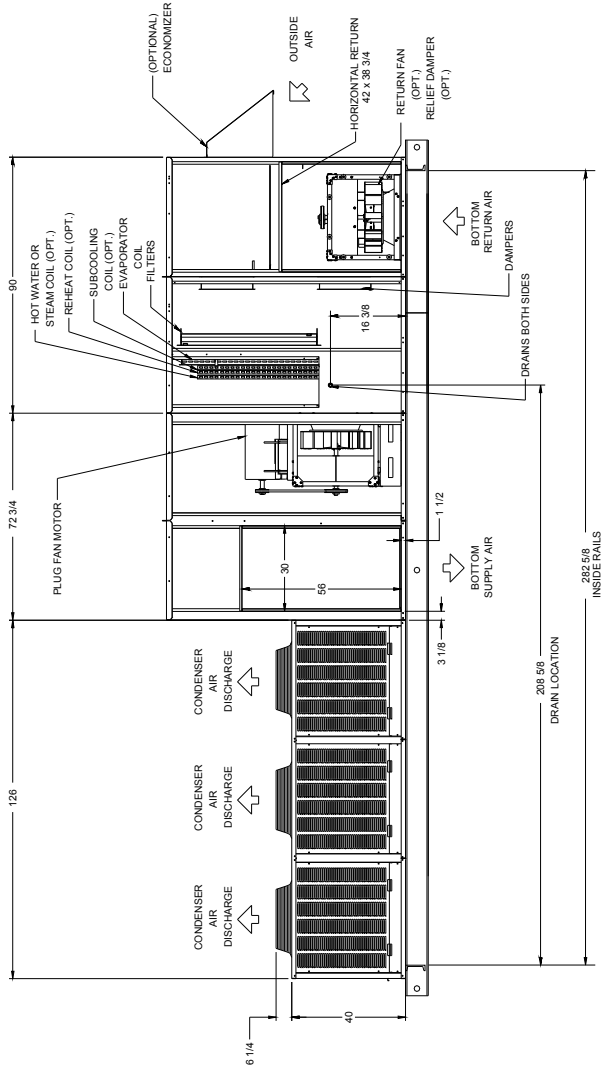


NOTE:
FOR UNITS UP TO 1.6 MILLION BTUs (4 FURNACES)

DC CABINET



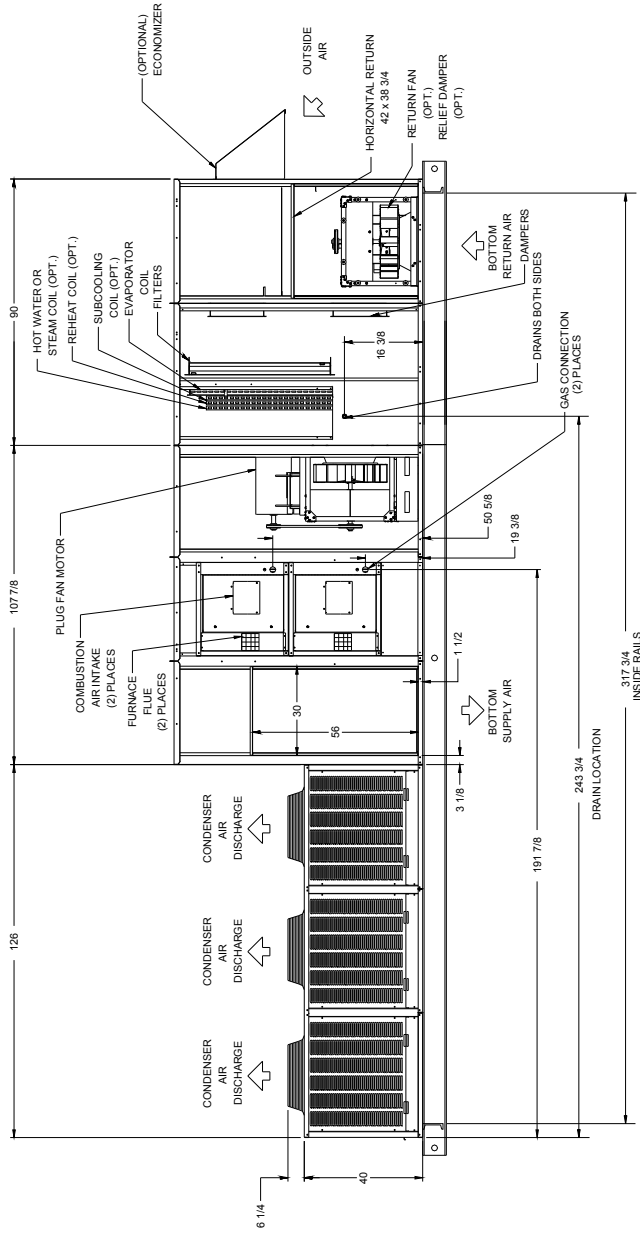
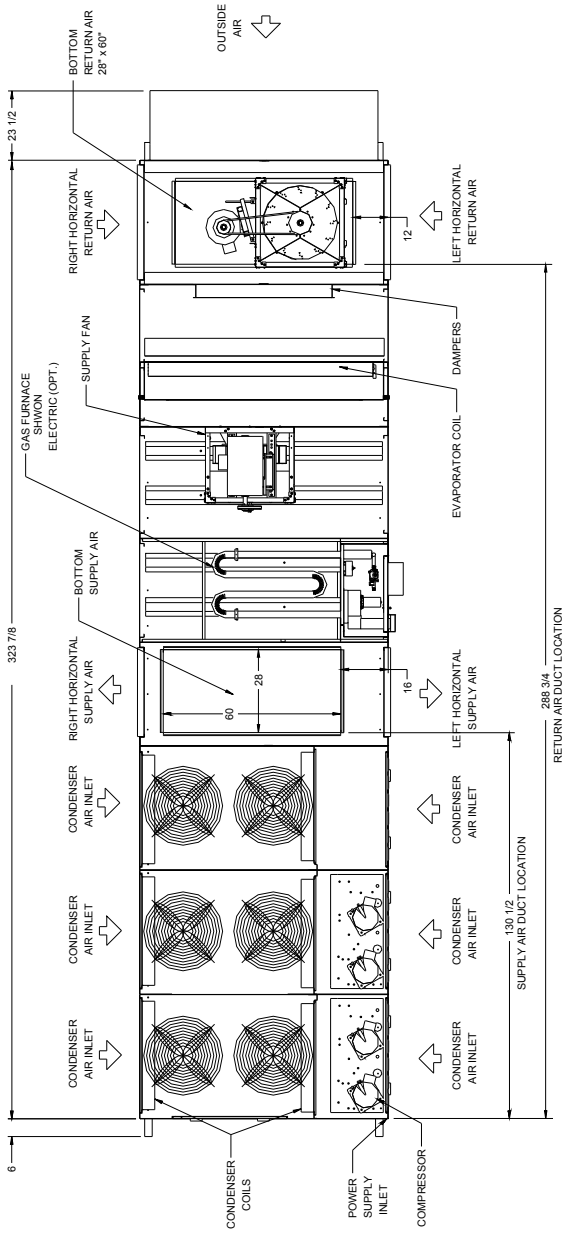
DC 420



UNIT DRAWINGS ARE TYPICAL OF THE CABINET SERIES
COMPONENTS MAY VARY ON SPECIFIC UNITS.

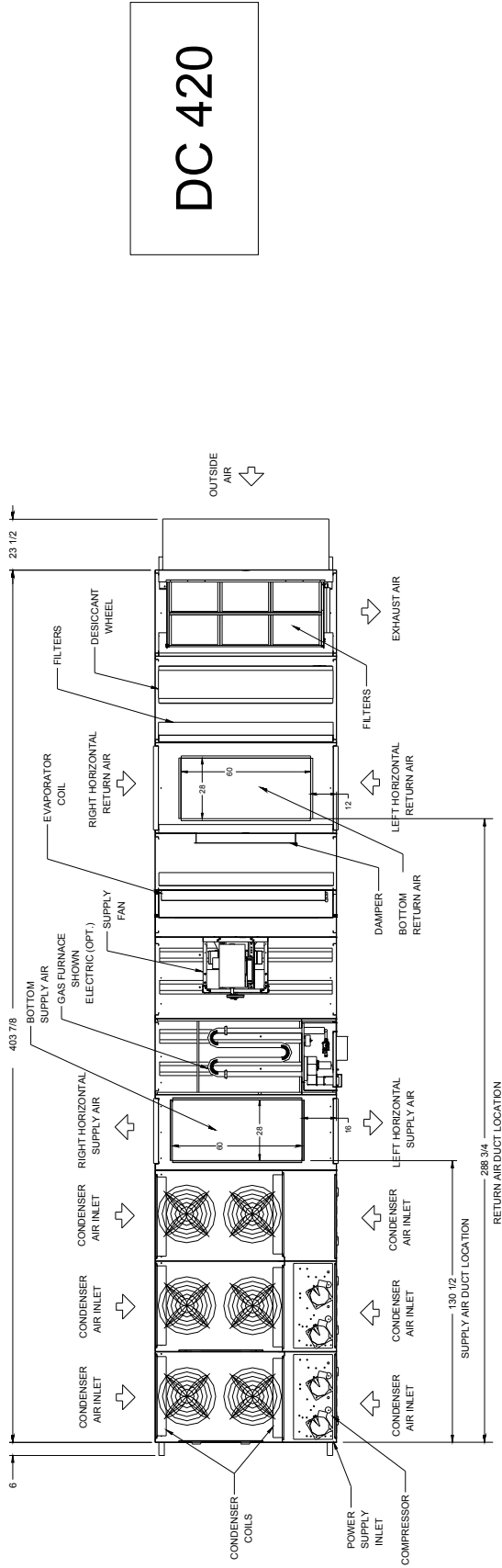
DC CABINET

DC 420

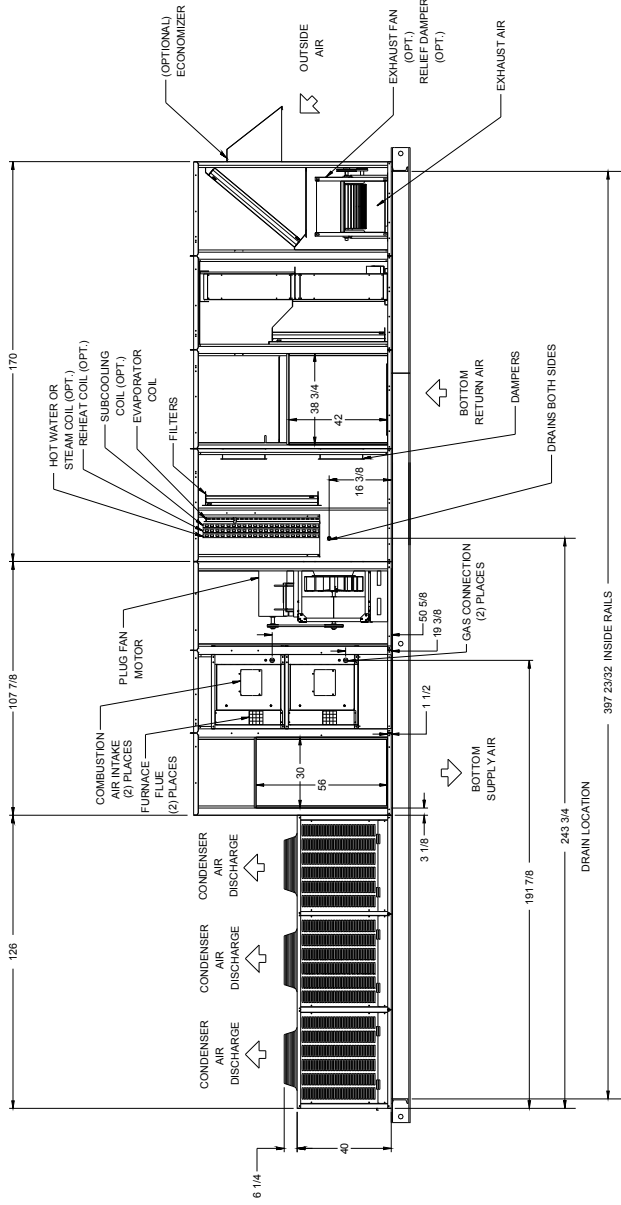


UNIT DRAWINGS ARE TYPICAL OF THE CABINET SERIES
COMPONENTS MAY VARY ON SPECIFIC UNITS.

DC EXTENDED CABINET

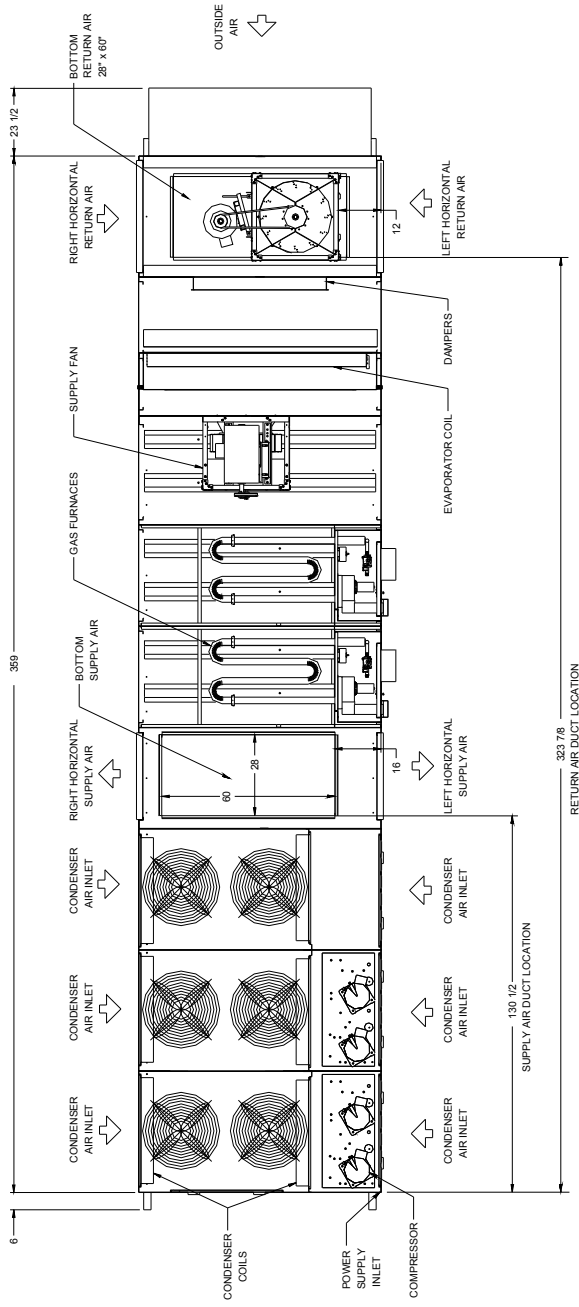


DC 420

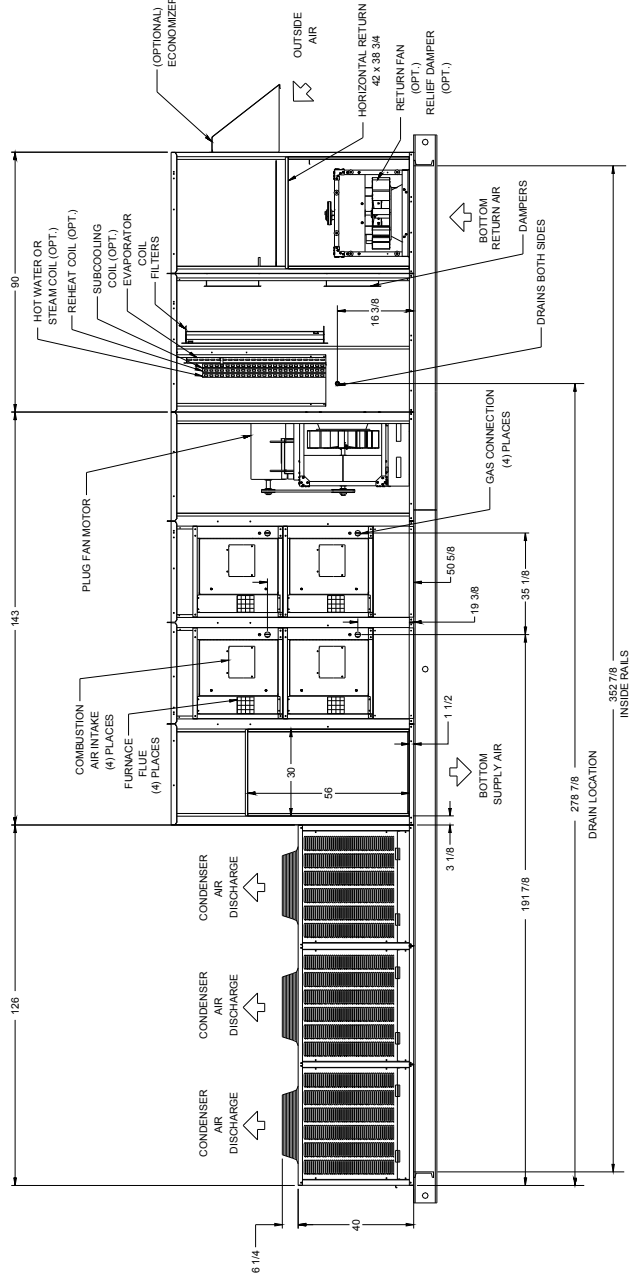


UNIT DRAWINGS ARE TYPICAL OF THE CABINET SERIES
COMPONENTS MAY VARY ON SPECIFIC UNITS.

DC CABINET

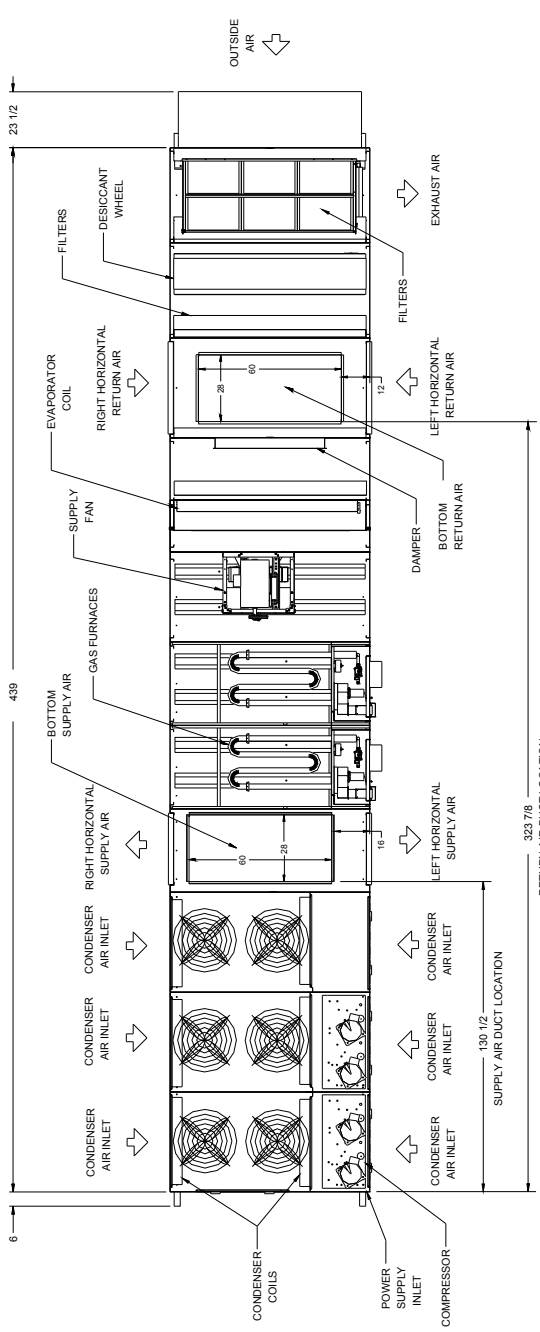


DC 420

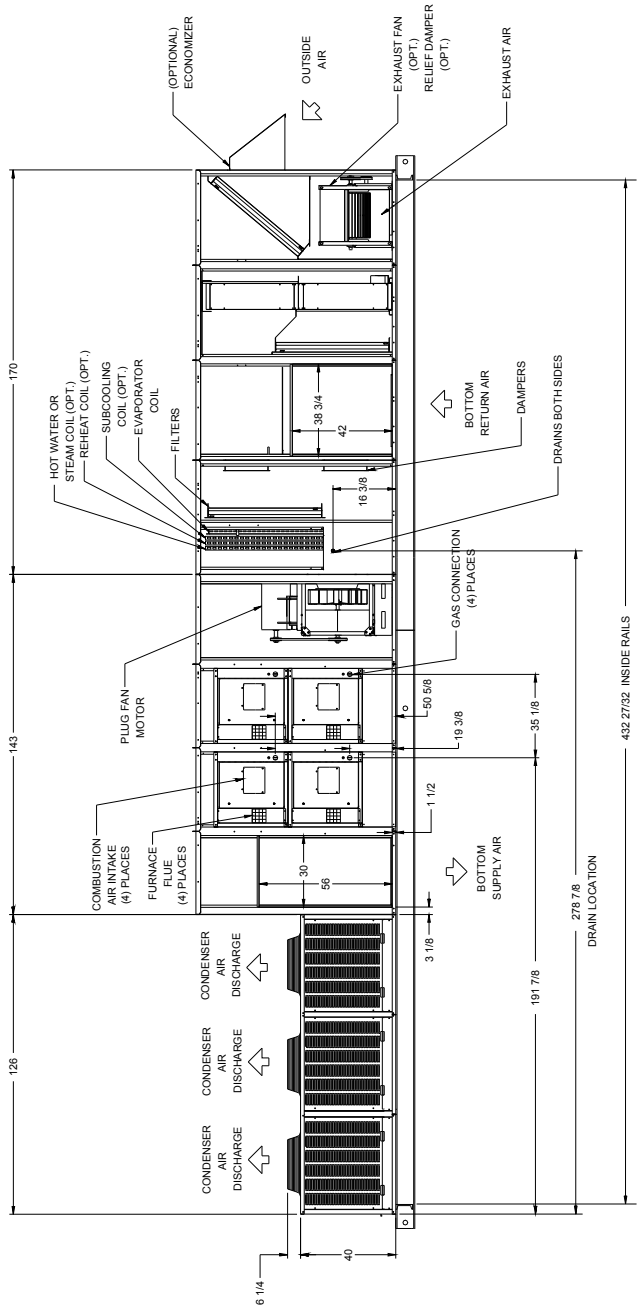


UNIT DRAWINGS ARE TYPICAL OF THE CABINET SERIES
COMPONENTS MAY VARY ON SPECIFIC UNITS.

DC EXTENDED CABINET



DC 420



UNIT DRAWINGS ARE TYPICAL OF THE CABINET SERIES COMPONENTS MAY VARY ON SPECIFIC UNITS.

Installation Code and Annual Inspections:

All installations and service of ADDISON equipment must be performed by a contractor qualified in the installation and service of equipment sold and supplied by Addison and conform to all requirements set forth in the ADDISON manuals and all applicable governmental authorities pertaining to the installation, service and operation of the equipment. To help facilitate optimum performance and safety, Addison recommends that a qualified contractor annually inspect your ADDISON equipment and perform service where necessary, using only replacement parts sold and supplied by ADDISON.

Further Information: Applications, engineering and detailed guidance on systems design, installation and equipment performance is available through ADDISON representatives. Please contact us for any further information you may require, including the Installation, Operation and Service Manual.

These products are not for residential use.

This document is intended to assist licensed professionals in the exercise of their professional judgment.



**7050 Overland Road
Orlando, FL 32810 USA
Telephone: 407.292.4400
Fax: 407.290.1329
www.addison-hvac.com**